

### Specifications

		Instantaneous electric water heater	
Model type		Digital model	Analog model
Target country		Thailand	
Power rating		4.5 kW / 3.5 kW	
DC pump		—	
Voltage		220 V / 50 Hz	
Exterior	Color	Diamond Black, Champagne Gold, Larimar Blue	Diamond Black
	IP25	●	●
	Anti-bacteria	●	●
Min. flow rate		1.5 L/m	
Max. flow rate		6.0 L/m	
Max. pressure		0.6 MPa	
Cold water connection		G1/2	
Water heater dimension		W210×D86×H395 mm	
Net weight		2.2 kg	2.1 kg
Stable outlet temperature with changing water flow rate		●	—
Manual reset thermostat		●	●
Lighting & surge protection		●	●
ELCB		●	●
Auto thermal cut off		55°C	
Auto flow sensor switch		●	●
Special functions	Relax mode (Cool / Hot / Wave)	●	—
	Smart mode	●	—
Shower head functions		Five-function spray and filter	Five-function spray

### Model Number

		Thailand
Digital model	Without DC Pump	
	EI-041SHNKG-BK-TH	
	EI-041SHNKG-LB-TH	
	EI-041SHNKG-CG-TH	
	EI-031SHNKG-BK-TH	
	EI-031SHNKG-LB-TH	
	EI-031SHNKG-CG-TH	
Analog model	EI-042SLNKG-BK-TH EI-032SLNKG-BK-TH	

## NORITZ CORP.

Tool No. 25001

Instantaneous electric water heater brochure 2025. I  
This catalog is current as of June 2025. 2506-00

- Specifications are subject to change for improvement without notice.
- The color and texture may differ from the actual product due to the nature of printed material.



<https://www.noritzasean.com/>

**NORITZ**

Instantaneous electric  
water heater

Japan  
Quality

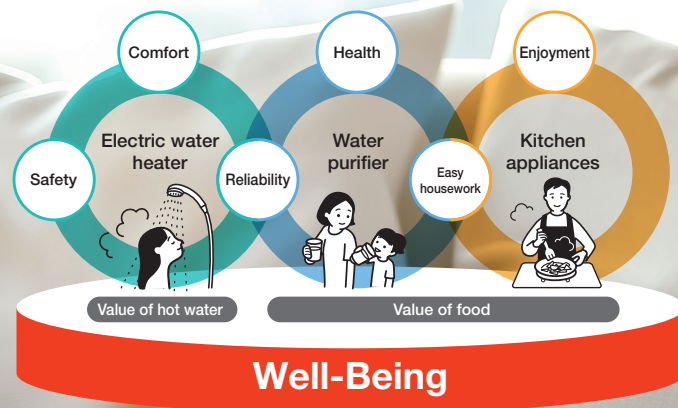
Experience a safe, comfortable,  
and relaxing shower.



# The Simple Comforts of Life

## Adding value to user-friendly baths and kitchen appliances

We improve the health and happiness of our clients' minds and bodies.



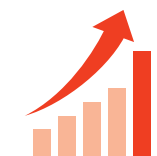
Noritz is a Japanese manufacturer and seller of housing equipment, mainly in the water heaters and HVAC segment and kitchen appliances segment. In March 2021, Noritz celebrated the 70th anniversary of its founding.



Company Name	Noritz Corporation
Headquarters	93 Edo-machi, Chuo-ku, Kobe, Hyogo, Japan
Paid-in Capital	JPY 20,167 million
President and CEO	Satoshi Haramaki
Number of Employees	Non-consolidated: 2,038 Consolidated: 6,128

\*As of December 31, 2024

Noritz has enjoyed consistent growth since its founding. In 2013, its sales exceeded **JPY 200 billion**



Boiling water Gas and oil water heater manufacturer  
**Hot water heater market share in Japan**  
Approx. **40 %**



Accelerating global expansion  
**17 countries and regions**  
\*As of April 30, 2025



Global performance  
2009 to 2024  
Approx. **4.4x** growth

# Experience a safe, comfortable, and relaxing shower.

## 01 Anti-bacterial exterior offers good hygiene and peace of mind

This product body utilizes an anti-bacterial exterior, providing greater hygiene and peace of mind for your showers.

## 02 Equipped with three functions for greater comfort

(Digital model only)

### Relax mode function

Features **Hot Mode**, **Cool Mode**, and **Wave Mode** to increase body relaxation effects  
Hot Mode: Sets temperature +2 °C,  
Cool Mode: Sets temperature -2 °C,  
Wave Mode: Alternates hot water supply to +2 °C/-2 °C

### Smart mode function

Up to three people's preferred shower temperatures can be registered.  
Enjoy a shower with a comfortable temperature with a single touch.

### Water temperature stabilizing function

Even when the water inlet temperature changes, users can enjoy a stable shower temperature.

## 03 Equipped with an electric leakage prevention function to safeguard users

This unit is equipped with an electric leakage safety device (test button). This prevents short-circuit accidents before they happen.

Noritz brings  
the luxury of truly  
relaxing moments  
into your daily life.

## Digital Model



Champagne Gold



Larimar Blue

Diamond Black



Shower head

The set shower temperature and mode can be seen at a glance on the digital display.

## Vibrant colors create a luxurious look in the bathroom

The digital model includes a set of filtered showerheads with five switchable water flow modes.



Spray



Massage



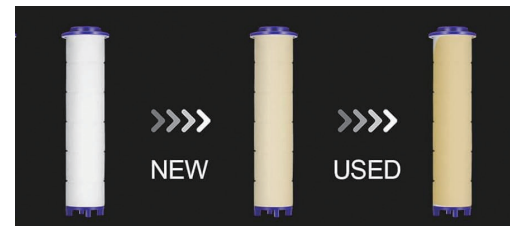
Spray & Massage



Misty



Spray & Misty



NEW

USED

## Built-in filter improves shower water quality

The filter built into the included shower head removes harmful substances and impurities such as rust and mud from tap water at a precision of one micrometer, helping to prevent hair loss and skin problems.

\*To maintain effectiveness, it is recommended to replace the filter when it turns yellow as shown in the photo. Replacement filters should be purchased from the distributor where you purchased this electric water heater.

## Analog Model



Diamond Black



Shower head

Temperature can be adjusted simply by turning a dial.

## Standard style with simple design & functions

The analog model includes a set of showerheads with five switchable water flow modes.



Mix



Massage



Comfort



Mono



Powder